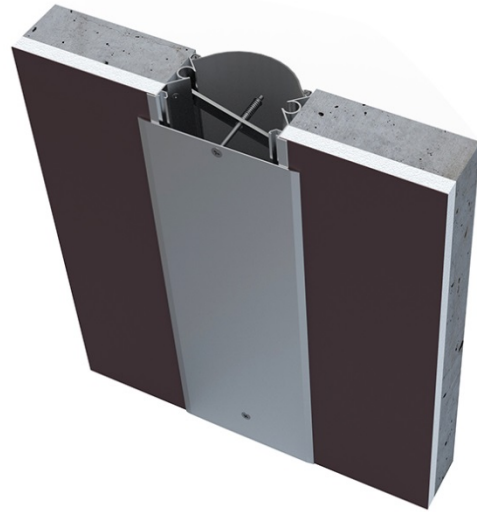


AR286 SERIES DATA SHEET

Seismic Expansion Joint Profile

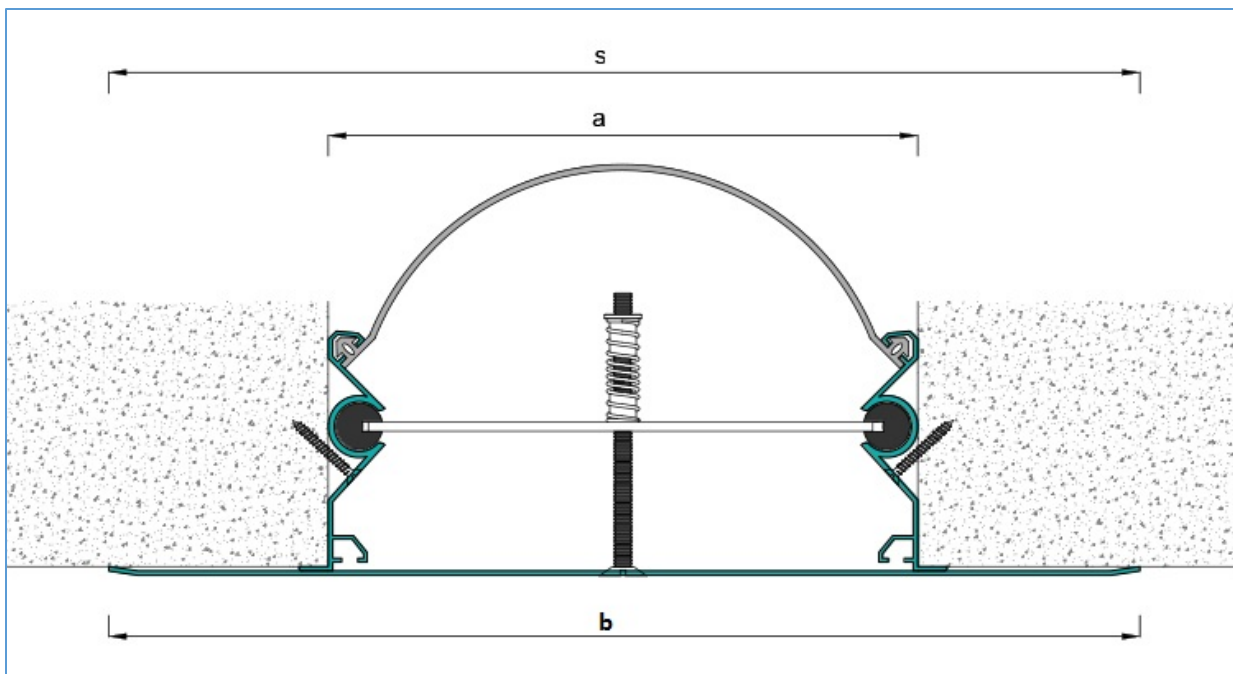
Wall

- Seismic expansion joint profiles
- Mill finish & Anodised aluminium
- Easy onsite installation
- Ideal for shopping malls, hospitals ...etc.
- Second barrier is optional



- ❖ Profile length: 3 m
- ❖ For fire and water barriers installation, please ask for our technical advice.

Profile Code	Joint Width(a)	Total Movement	Top Surface Width(b)	Total profile width (s)
AR286-100	100mm	+50/-50mm	150mm	150mm
AR286-150	150mm	+75/-75mm	250mm	250mm
AR286-200	200mm	+100/-100mm	350mm	350mm
AR286-250	250mm	+125/-125mm	400mm	400mm
AR286-300	300mm	+150/-150mm	500mm	500mm



Aluminium Alloy 6063.T5 Chemical Properties

	Si	Fe	Cu	Mn	Mg	Zn	Ti	Cr
Standard of 6063T5	0.20 - 0.60	Max 0.35	Max 0.10	Max 0.10	0.45 - 0.90	Max 0.10	Max 0.10	Max 0.10

Aluminium Alloy 6063.T5 Physical Properties

Property	Value
Density	2.70 Kg/m ³
Melting Point	600 °C
Thermal Expansion	23.5 x 10 ⁻⁶ /K
Modulus of Elasticity	69.5 GPa
Thermal Conductivity	200W/m.K
Electrical Resistivity	0.035 x 10 ⁻⁶ Ω .m



+90 (212) 485 16 15
+90 505 187 62 30



www.arfen.com
arfen@arfen.com



Atatürk Sanayi Bölgesi Ömerli Mh. Hakkı İleri Cd.
Gülce Sk. No:22 34555 Hadımköy/ İSTANBUL