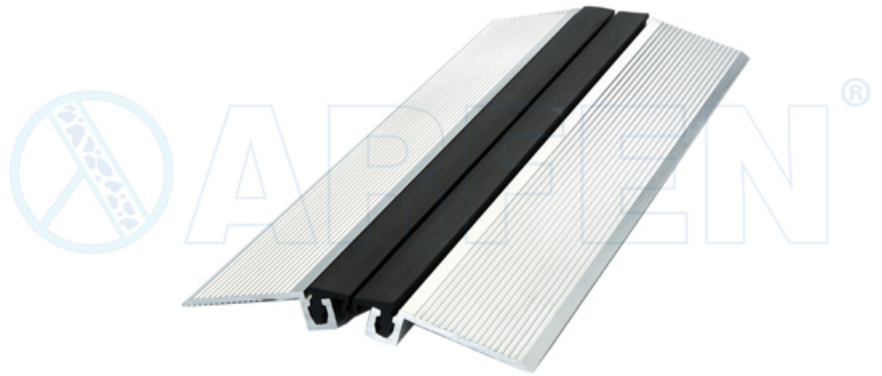


## AR 154-030 DATA SHEET

### Aluminium and TPE Expansion Joint Profile

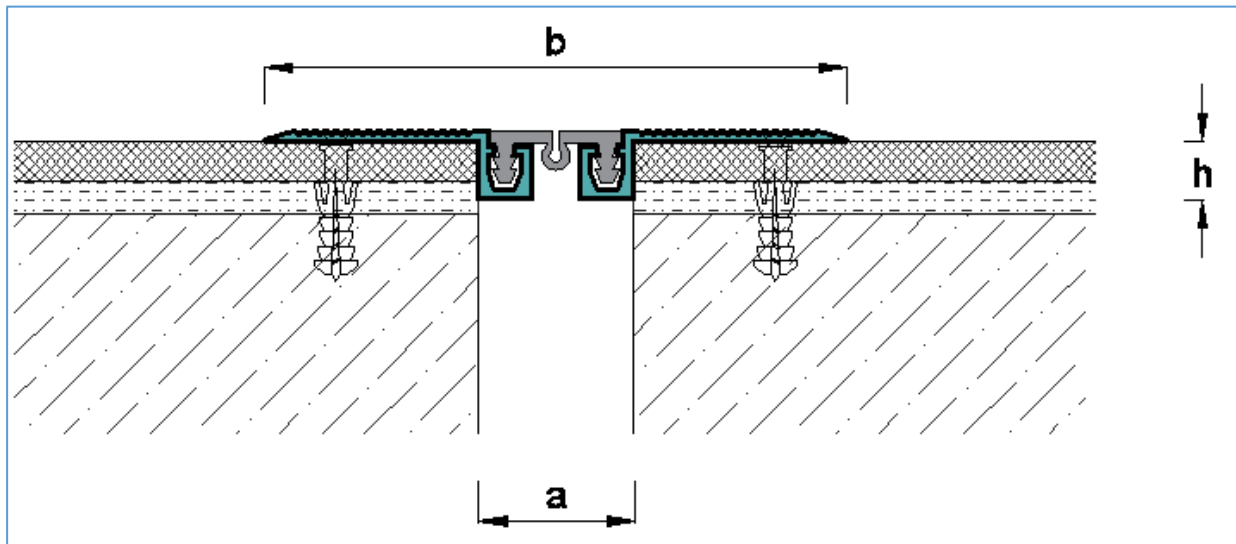
#### Floor Profiles (Over Finishing)

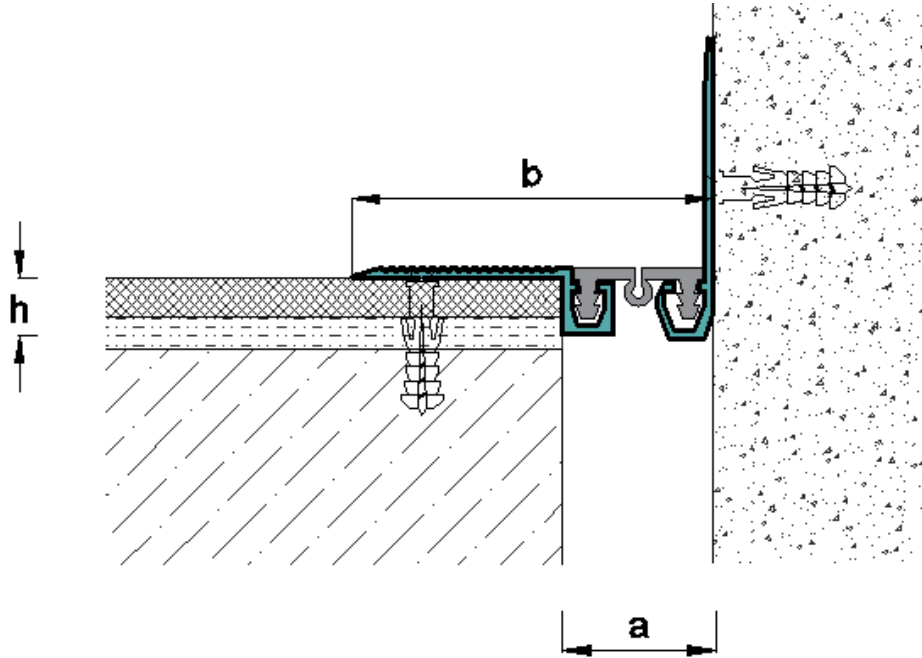
- Mill finish aluminium profile.
- Replaceable TPE insert.
- Easy onsite installation.
- Suitable for granite, ceramic and Vinyl flooring.
- Ideal for shopping malls ...etc.
- Easy to clean.



- ❖ Standard colors: black, gray and cream
- ❖ Profile length: 3 m
- ❖ For fire and water barriers installation, please ask for our technical advice.

Profile Code	Joint Width(a)	Total Movement	Top Surface Width(b)	Installation Depth(h)	Load Capacity	Block out width(s)
AR154-030	30mm	± 10 mm	125mm	12mm	Pedestrian traffic	116mm
AR154-030K	30mm	± 10 mm	77mm	12mm	Pedestrian traffic	86mm





## Aluminium Alloy 6063.T5 Chemical Properties

	Si	Fe	Cu	Mn	Mg	Zn	Ti	Cr
Standard of 6063T5	0.20 - 0.60	Max 0.35	Max 0.10	Max 0.10	0.45 - 0.90	Max 0.10	Max 0.10	Max 0.10

## Aluminium Alloy 6063.T5 Physical Properties

Property	Value
Density	2.70 Kg/m <sup>3</sup>
Melting Point	600 °C
Thermal Expansion	23.5 x 10 <sup>-6</sup> /K
Modulus of Elasticity	69.5 GPa
Thermal Conductivity	200W/m.K
Electrical Resistivity	0.035 x 10 <sup>-6</sup> Ω .m

## TPE Properties

	Value	Unit	Standard
<b>Physical</b>			
Hardness	65	SHORE A	ISO 868 (3 second )
Density	1,21	gr / cm3	ISO 1183 1-A
Brittleness Point	-55	°C	*
<b>Mechanical</b>			
100% Modulus	1,85	Mpa	ISO 37, DIN 53504
300% Modulus	2,50	Mpa	ISO 37, DIN 53504
Tensile Strength At Break	4,20	Mpa	ISO 37, DIN 53504
Elongation at Break	600	%	ISO 37, DIN 53504
<b>Aging</b>			
Compression Set (72h/23°C)	39	%	ASTM D 395-89-B
Compression Set (22h/70°C)	65	%	ASTM D 395-89-B
<b>Thermal</b>			
Max. Dynamic Service Temperature	90	°C	*
Max. Static Service Temperature	135	°C	*
<b>Environmental Resistance</b>			
Ozone	Excellent		
Water	Excellent		
Alcohol	Excellent		
Olive Oil	Fair		
Sulphuric Acid	Good		
Detergent	Good		

