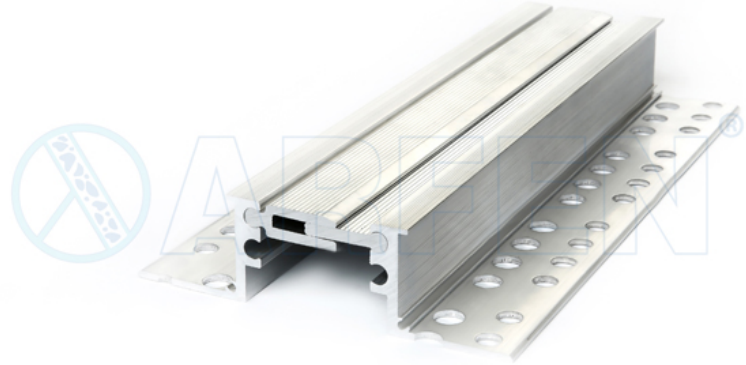


AR 308-050 SERIES DATA SHEET

Aluminium Expansion Joint Profile

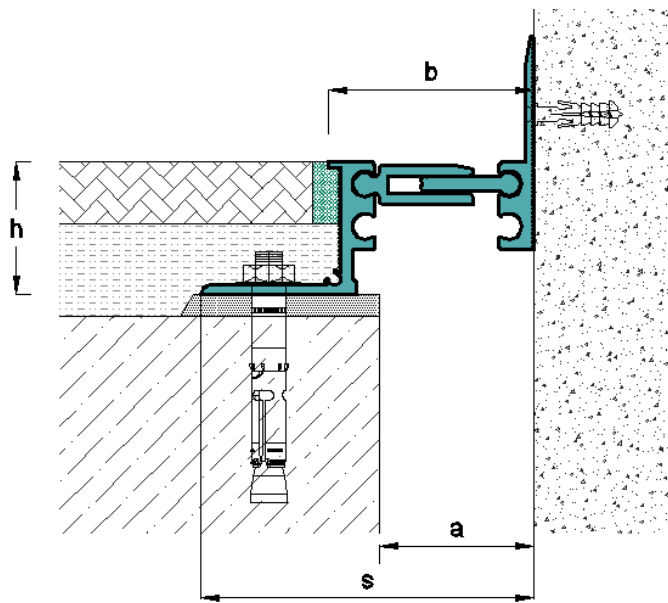
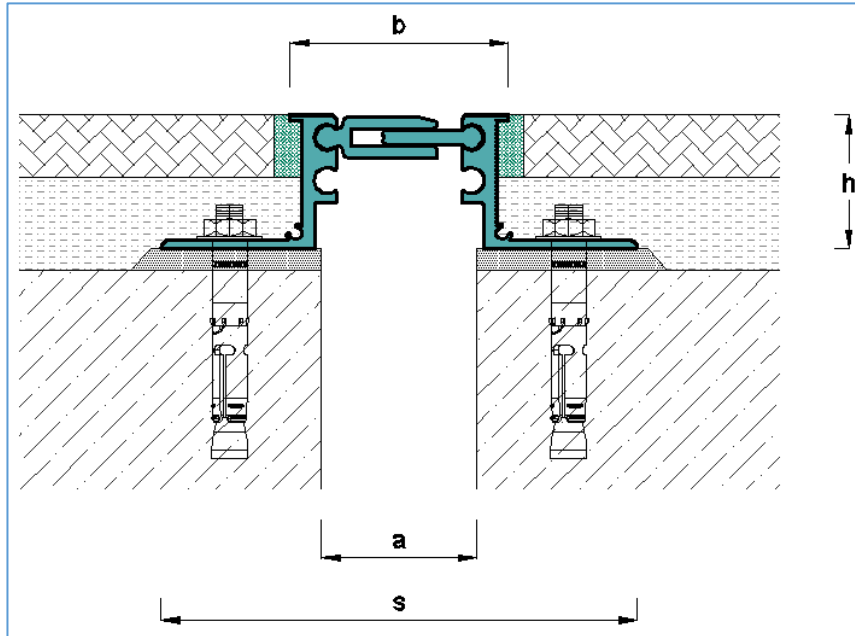
Floor Profiles

- Mill finish aluminium profile
- Easy installation on site.
- Ideal for use with screed, ceramic tile, granite etc.
- Easy to clean



- ❖ Profile length: 3 lm.
- ❖ For fire and water barriers installation, please ask for our technical advice.

| Profile Code | Joint Width(a) | Total Movement | Top Surface Width(b) | Installation Depth(h) | Load Capacity | Block out width(s) |
|--------------|----------------|----------------|----------------------|-----------------------|--------------------------------------|--------------------|
| AR308-050 | 50mm | ± 10mm | 70mm | 43mm | 3.5 tones vehicle,2.5 tones forklift | 155mm |
| AR308-050K | 50mm | ± 10mm | 65mm | 43mm | 3.5 tones vehicle,2.5 tones forklift | 110mm |
| AR308-051 | 50mm | ± 10mm | 70mm | 14mm | Pedestrian traffic | 165mm |
| AR308-051K | 50mm | ± 10mm | 65mm | 14mm | Pedestrian traffic | 115mm |
| AR308-052 | 50mm | ± 10mm | 70mm | 28mm | 1.5 tones vehicle | 155mm |
| AR308-052K | 50mm | ± 10mm | 65mm | 28mm | 1.5 tones vehicle | 110mm |
| AR308-053 | 50mm | ± 10mm | 70mm | 60mm | 3.5 tones vehicle,2.5 tones forklift | 155mm |
| AR308-053K | 50mm | ± 10mm | 65mm | 60mm | 3.5 tones vehicle,2.5 tones forklift | 110mm |
| AR308-054 | 50mm | ± 10mm | 70mm | 80mm | 3.5 tones vehicle,2.5 tones forklift | 155mm |
| AR308-054K | 50mm | ± 10mm | 65mm | 80mm | 3.5 tones vehicle,2.5 tones forklift | 110mm |



Aluminium Alloy 6063.T5 Chemical Properties

| | Si | Fe | Cu | Mn | Mg | Zn | Ti | Cr |
|--------------------|-------------|----------|----------|----------|-------------|----------|----------|----------|
| Standard of 6063T5 | 0.20 - 0.60 | Max 0.35 | Max 0.10 | Max 0.10 | 0.45 - 0.90 | Max 0.10 | Max 0.10 | Max 0.10 |

Aluminium Alloy 6063.T5 Physical Properties

| Property | Value |
|------------------------|-------------------------------|
| Density | 2.70 Kg/m ³ |
| Melting Point | 600 °C |
| Thermal Expansion | 23.5 x 10 ⁻⁶ /K |
| Modulus of Elasticity | 69.5 GPa |
| Thermal Conductivity | 200W/m.K |
| Electrical Resistivity | 0.035 x 10 ⁻⁶ Ω .m |