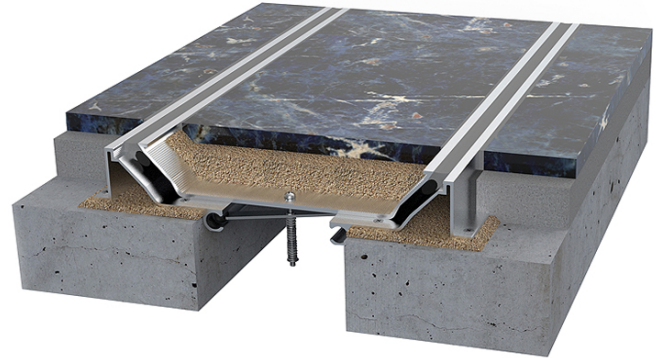


AR806 SERIES DATA SHEET

Seismic Expansion Joint Profile

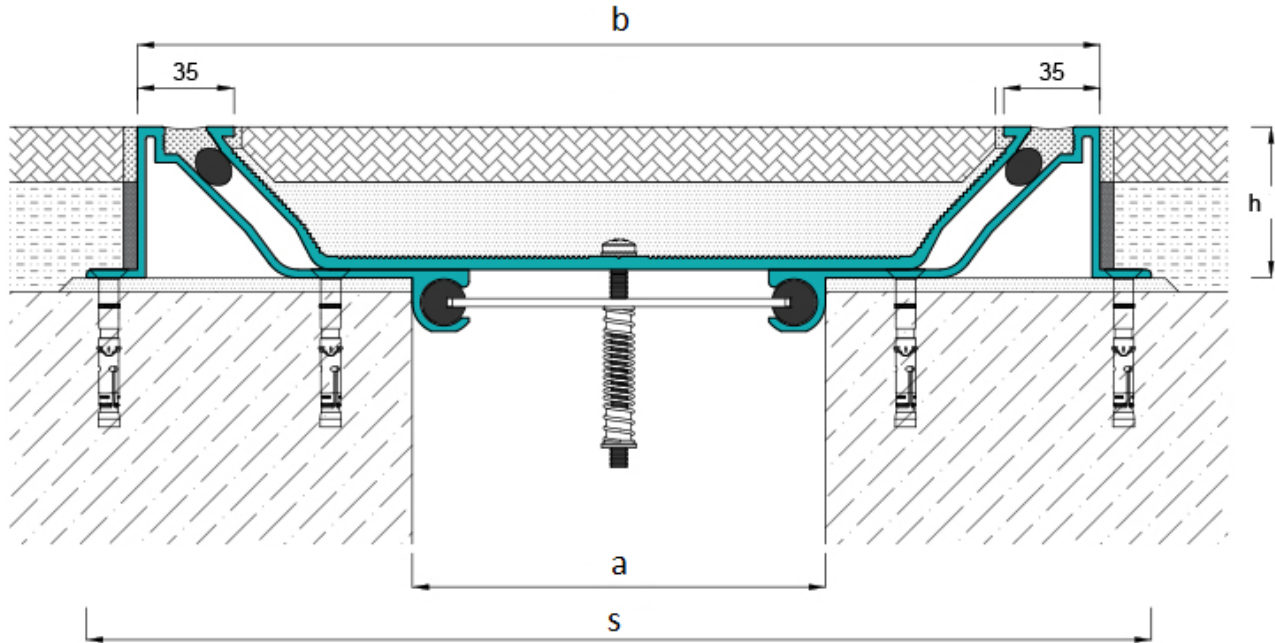
For Floor to Floor

- Seismic expansion joint profiles
- Easy onsite installation
- Ideal for shopping malls, hospitals ...etc
- Mill finish aluminum

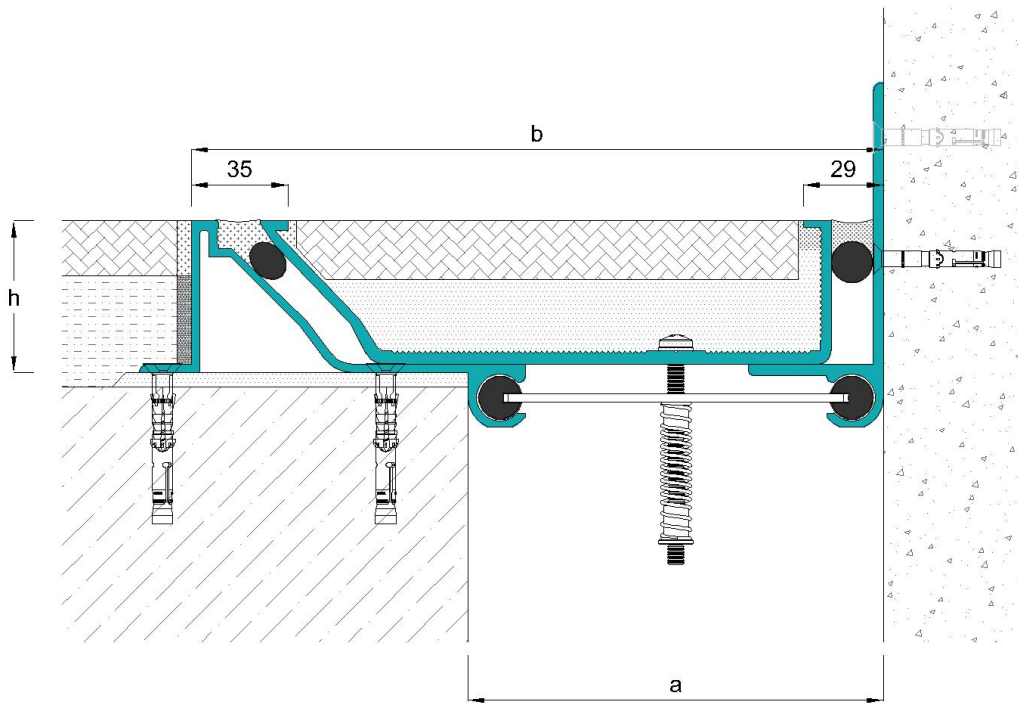


- ❖ Profile length: 3 lm,
- ❖ For fire and water barriers installation, please ask for our technical advice.

Profile Code	Joint Width(a)	Total Movement	Top Surface Width(b)	Installation Depth(h)	Load Capacity	Total profile width (s)
AR 806-100	100 mm	± 50 mm	300 mm	55 mm	Pedestrian / Cleaning Machine	337 mm
AR 806-150	150 mm	± 75 mm	350 mm	55 mm	Pedestrian / Cleaning Machine	387 mm
AR 806-200	200 mm	± 100 mm	400 mm	55 mm	Pedestrian / Cleaning Machine	437 mm
AR 806-250	250 mm	± 125 mm	550 mm	65 mm	Pedestrian / Cleaning Machine	587 mm
AR 806-300	300 mm	± 150 mm	600 mm	65 mm	Pedestrian / Cleaning Machine	637 mm
AR 806-350	350 mm	± 175 mm	650 mm	65 mm	Pedestrian / Cleaning Machine	687 mm
AR 806-400	400 mm	± 200 mm	700 mm	65 mm	Pedestrian / Cleaning Machine	737 mm
AR 806-450	450 mm	± 200 mm	750 mm	65 mm	Pedestrian / Cleaning Machine	787 mm
AR 806-500	500 mm	± 200 mm	800 mm	65 mm	Pedestrian / Cleaning Machine	837 mm



Profile Code	Joint Width(a)	Total Movement	Top Surface Width(b)	Installation Depth(h)	Load Capacity	Total profile width (s)
AR 806-100K	100 mm	± 50 mm	200 mm	55 mm	Pedestrian / Cleaning Machine	220 mm
AR 806-150K	150 mm	± 75 mm	250 mm	55 mm	Pedestrian / Cleaning Machine	269 mm
AR 806-200K	200 mm	± 75 mm	300 mm	55 mm	Pedestrian / Cleaning Machine	319 mm
AR 806-250K	250 mm	± 100 mm	400 mm	65 mm	Pedestrian / Cleaning Machine	419 mm
AR 806-300K	300 mm	-100/+150 mm	450 mm	65 mm	Pedestrian / Cleaning Machine	469 mm
AR 806-350K	350 mm	-100/+175 mm	500 mm	65 mm	Pedestrian / Cleaning Machine	519 mm
AR 806-400K	400 mm	-100/+200 mm	550 mm	65 mm	Pedestrian / Cleaning Machine	569 mm
AR 806-450K	450 mm	-100/+200 mm	600 mm	65 mm	Pedestrian / Cleaning Machine	619 mm
AR 806-500K	500 mm	-100/+200 mm	650 mm	65 mm	Pedestrian / Cleaning Machine	669 mm



Aluminium Alloy 6063.T5 Chemical Properties

	Si	Fe	Cu	Mn	Mg	Zn	Ti	Cr
Standard of 6063T5	0.20 - 0.60	Max 0.35	Max 0.10	Max 0.10	0.45 - 0.90	Max 0.10	Max 0.10	Max 0.10

Aluminium Alloy 6063.T5 Physical Properties

Property	Value
Density	2.70 Kg/m ³
Melting Point	600 °C
Thermal Expansion	23.5 x 10 ⁻⁶ /K
Modulus of Elasticity	69.5 GPa
Thermal Conductivity	200W/m.K
Electrical Resistivity	0.035 x 10 ⁻⁶ Ω .m

TPE Properties

	Value	Unit	Standard
Physical			
Hardness	65	SHORE A	ISO 868 (3 second)
Density	1,21	gr / cm3	ISO 1183 1-A
Brittleness Point	-55	°C	*
Mechanical			
100% Modulus	1,85	Mpa	ISO 37, DIN 53504
300% Modulus	2,50	Mpa	ISO 37, DIN 53504
Tensile Strength At Break	4,20	Mpa	ISO 37, DIN 53504
Elongation at Break	600	%	ISO 37, DIN 53504
Aging			
Compression Set (72h/23°C)	39	%	ASTM D 395-89-B
Compression Set (22h/70°C)	65	%	ASTM D 395-89-B
Thermal			
Max. Dynamic Service Temperature	90	°C	*
Max. Static Service Temperature	135	°C	*
Environmental Resistance			
Ozone	Excellent		
Water	Excellent		
Alcohol	Excellent		
Olive Oil	Fair		
Sulphuric Acid	Good		
Detergent	Good		

