

## RG200 DATA SHEET

### **PARKING LOT WALL PROTECTION SYSTEM**

-200 mm Height

-25 mm Wall Offset

-Reflective yellow Tape

-Maximize valuable corridor space.

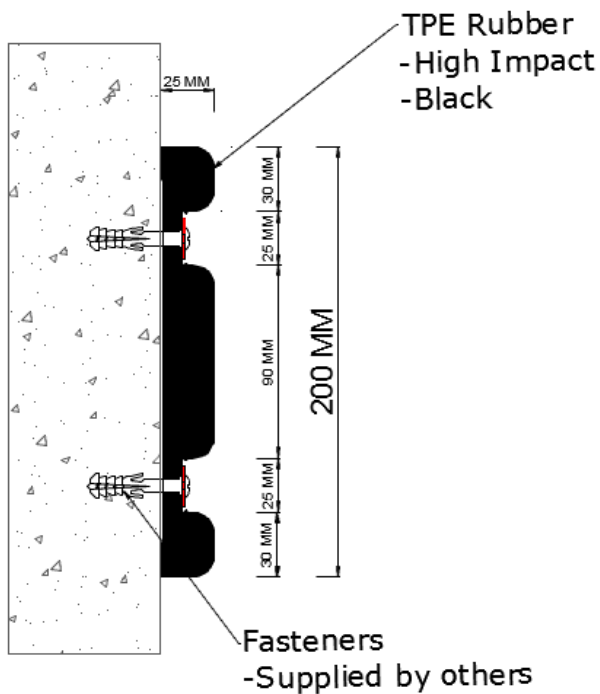
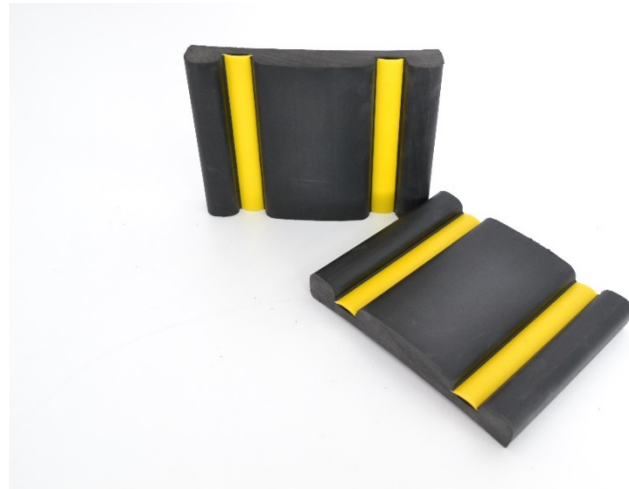
-Protect vulnerable walls from scuffs and scrapes.

-Effective against heavy moving traffic and more.

-Avoid wall damage and cut maintenance costs.

#### **Specifications:**

-Impact Resistance



## TPE Properties

	Value	Unit	Standard
<b>Physical</b>			
Hardness	65	SHORE A	ISO 868 (3 second )
Density	1,21	gr / cm3	ISO 1183 1-A
Brittleness Point	-55	°C	*
<b>Mechanical</b>			
100% Modulus	1,85	Mpa	ISO 37, DIN 53504
300% Modulus	2,50	Mpa	ISO 37, DIN 53504
Tensile Strength At Break	4,20	Mpa	ISO 37, DIN 53504
Elongation at Break	600	%	ISO 37, DIN 53504
<b>Aging</b>			
Compression Set (72h/23°C)	39	%	ASTM D 395-89-B
Compression Set (22h/70°C)	65	%	ASTM D 395-89-B
<b>Thermal</b>			
Max. Dynamic Service Temperature	90	°C	*
Max. Static Service Temperature	135	°C	*
<b>Environmental Resistance</b>			
Ozone	Excellent		
Water	Excellent		
Alcohol	Excellent		
Olive Oil	Fair		
Sulphuric Acid	Good		
Detergent	Good		

